

SAMO



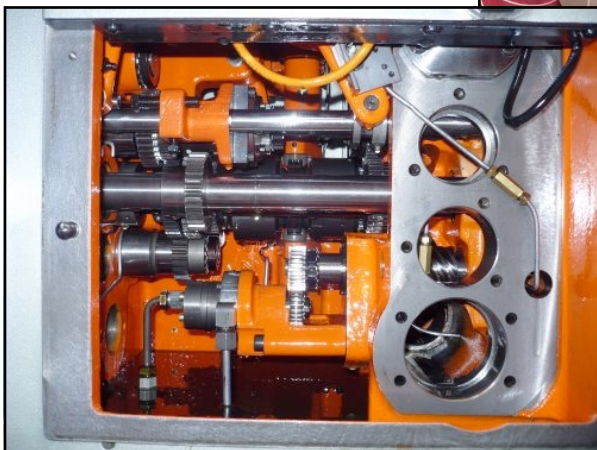
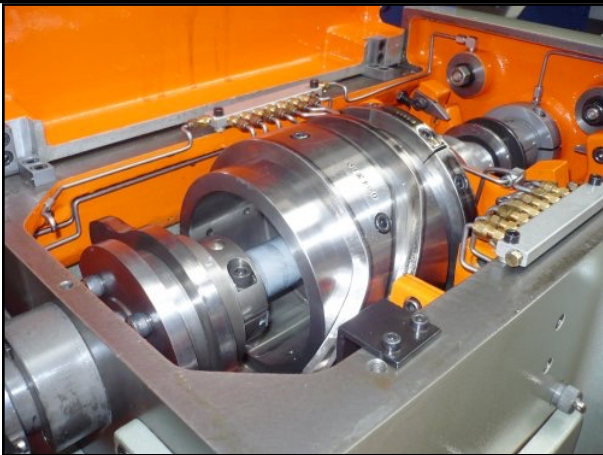
SAMO

SAVOIE ALPES MACHINES OUTILS

**SELL & BUY
NEW & USED MACHINE TOOLS
REBUILDING OF MACHINE TOOLS**

ZAC des Bordets 2
792 Rue des Sarcelles
74130 BONNEVILLE
France
Tel: 00 33 (0) 4 50 03 17 52
www.samo.fr

New and Used Spare Parts and Attachements



SAMO

SAVOIE ALPES MACHINES OUTILS

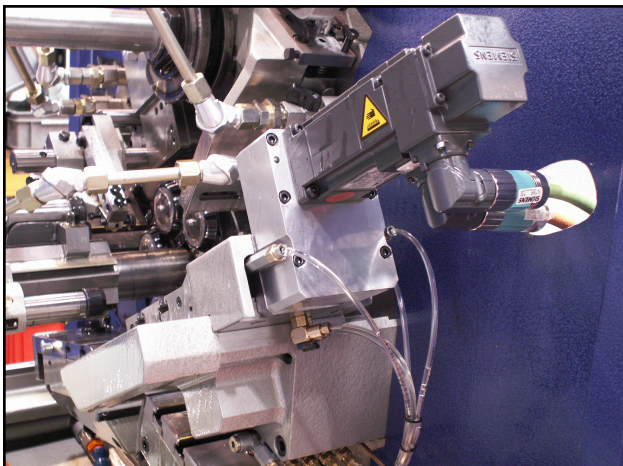
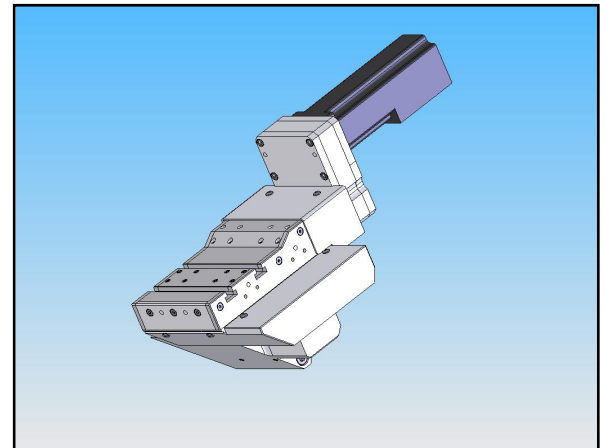


REBUILDING TORNOS AS14 - SAS16 - SAS16 DC BS14 - BS20

Variation Cam Spindle
Thread milling CNC
Slide CNC
Pick Up CNC

Control Cabinet

SIEMENS - FANUC

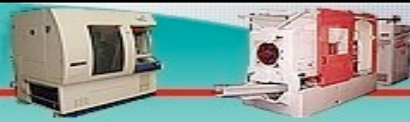


TECHNICAL CHARACTERISTICS POS 4:

Standard stroke axis X	25 mm
Max linear speed axis X	10 m/mm
Standard stroke axis Z	50 mm
Max linear speed axis Z	15 m/mm
Pushing force on the axis	2000 N
Resolution	1 μ
Ball screw with preferred nut	
Guiding on ball rails	
Complete centralized lubricating	

Using standards tool holders - Minimum dimensions - Visual access operator

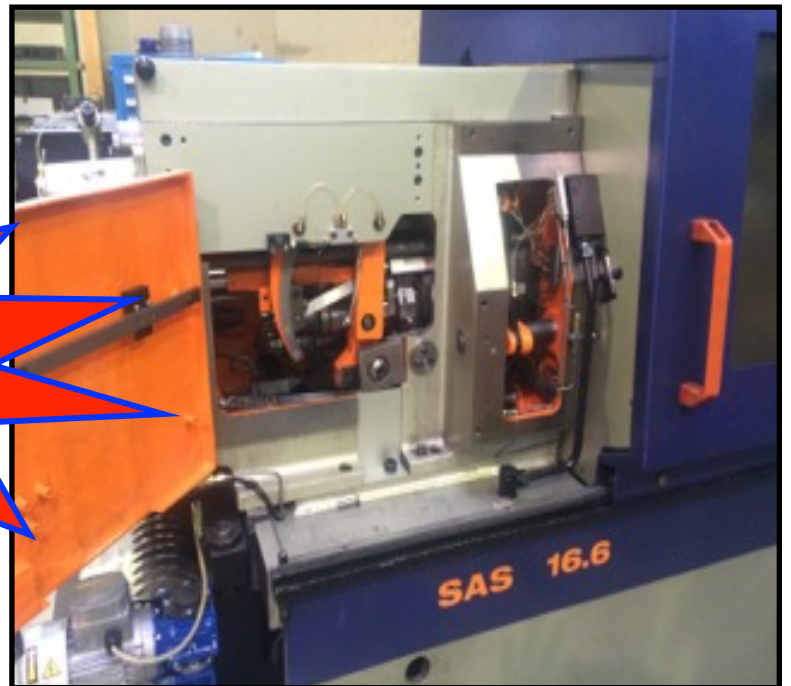
SAMO SAS
ZAC des Bordets 2
792 Rue des Sarcelles
74130 BONNEVILLE
Tél 04 50 03 17 52
Web : www.samo.fr – E-Mail : samo@samo.fr



KIT STOPPING

TORNOS AS 14 - SAS16 - SAS16 DC - SAS16.6

**NEW
KIT STOPPING SPINDLE
TORNOS
AS14-SAS16-SAS16 DC-SAS16.6**



We can retrofit your Machine in Stopping Spindle or you sell one equipped



SPARE PARTS TORNOS AS14/SAS16/SAS16 DC/SAS16.6/ BS14/BS20

Pages

Main Spindle group	5
Pulley shaft Spindles rotation group	8
Central Block group	9
Central Saft group	10
Pickup group	11
Clamping group	15
Thread milling attachment group	16
Indépendents group	17
Drum group	18
Reel or Drum + Support group	19
Slides group	21
Bolting and Indexing group	24
Rod control Slides feed stations 1-2-3-4	25
Oscillating bar stop	26
Loading group	27
Speed box production group	29
Spindle speed box group	32
Spare Parts BS20	34
Equipments and Attachments group	35



For infos about prices and time delivery : www.samo.fr or samo@samo.fr



Main Spindle Group

TORNOS AS14 - SAS16 - SAS16 DC - SAS16.6

Main Spindle Group



Used Spindle rectified
Ref: 30957
AS14



Spindle
Ref: 99860
SAS16 - SAS16.6



Gear spindle Z=30
Ref: 10558
AS14



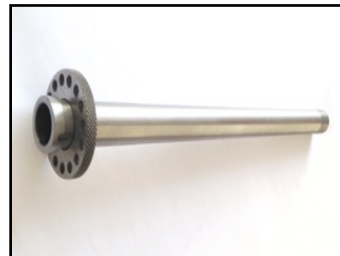
Gear spindle
Ref: 382
SAS16 - SAS16.6



Feed tube
Complete Ref: 104508
AS14



Feed tube
Complete Ref: 107714
SAS16 - SAS16DC



Clamping tube
Complete Ref: 20503
AS14



Clamping tube
Complete Ref: 104857
SAS16 - SAS16 DC



Clamping tube
Complete Ref: 108628
SAS16.6



Toggles ring
Ref: 10561
AS 14



Notched bushing clamping tube
Ref: 99158
SAS16.6



Toggle holder
Ref: 20501
AS14



Toggle holder
Ref: 99877
SAS16 - SAS16.6



Clamping toggle
Ref: 94996 or AS12149
AS14 - SAS16 - SAS16.6



Clamping sleeve
Ref: 10556 or AS12185-1
AS14



Clamping sleeve
Ref: 381
SAS16 - SAS16.6



Main Spindle Group

TORNOS AS14 - SAS16 - SAS16 DC - SAS16.6

Main Spindle



Stop ring toggle holder
Ref : 10551 or AS12153
AS14



Stop ring toggle holder
Ref : 48377
SAS16 - SAS16.6



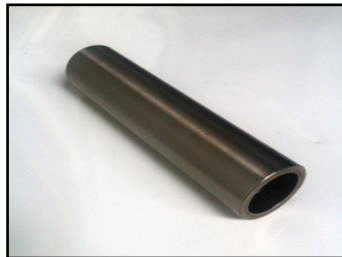
Nut feed tube
Ref : 365913
AS14



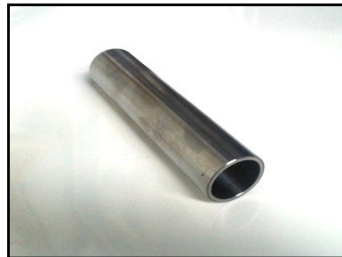
Nut feed tube
Ref : 365917
SAS16



Nut feed tube
Ref : 365765
SAS16.6



Spacer bearing
Ref : 28806 or AS12479
AS14



Spindle spacer
204,5x40mm
Ref : 93832
SAS16



Spindle spacer
184x48mm
Ref : 96906
SAS16.6



Spindle nose
Ref : 30883 or AS12515
AS14



Spindle nose
Ref : 385
SAS16



Spindle nose
Ref : 365347
SAS16.6



Central gear Z=45
Ref : 10557
AS14 - SAS16 - SAS16.6



Solid carbide axis toggle
Ref : 4770
AS14 - SAS16 - SAS16.6



Captive key
Ref : 48550 or AS12881
AS14 - SAS16 - SAS16.6



Phasing ring
Ref : 84696
SAS16 - SAS16.6



Pawn of phasing ring
Ref : 84697
AS14 - SAS16 - SAS16.6



Main Spindle Group

TORNOS AS14 - SAS16 - SAS16 DC - SAS16.6

Main Spindle



Ring spindle nose
Ref : 30956 or AS12517
AS14



Ring spindle nose
Ref : 46737
SAS16



Back ring feed tube
Ref : 10574
AS14



Distance ring
Ref : 91032
SAS16 - SAS16.6



Fixation nut bearing
Ref : 3891 or AS1287
AS 14



Fixation nut bearing
Ref : 383
SAS16



Lock nut bar guide
Ref : 91415
SAS16 - SAS16.6



Blocking nut bar guide
Ref : 10294 or AS1297
AS 14



Pulley Shaft Spindles rotation Group

AS14- SAS16 - SAS16 DC - SAS16.6

Pulley shaft spindles rotation group



Pulley shaft
Ref : 10730
AS14



Pulley shaft
Ref : 86064
SAS16 - SAS16.6



Shaft lubricating pump
Ref : 10728
AS14



Shaft lubricating pump
Ref : 95011
SAS16 - SAS16.6



Disc key pulley shaft
Ref : 11352
SAS16 - SAS16.6



Nut pulley shaft M30x1,25
Ref : 10707
AS14



Nut pulley shaft M25x1,25
Ref : 10708
AS14



Nut pulley shaft M30x1,50
Ref : 210378
SAS16 - SAS16.6



Safety nut M25x1,50
Ref : 211519
SAS16 - SAS16.6



Pulley hub
Ref : 40442
AS14



Gear
Ref : 10692
SAS16 - SAS16.6



Pulley
Ref : AS20198
AS14 - SAS16



Helical gear z=23
Ref : 10361
AS14 - SAS16 - SAS16.6



Helical gear z=45
Ref : 10686
AS14 - SAS16 - SAS16.6



Helical gear left z=34
Ref : 94799
AS14 - SAS16 - SAS16.6



Helical gear right z=34
Ref : 95006
AS14 - SAS16 - SAS16.6



Central Block Group

TORNOS AS14- SAS16 - SAS16 DC - SAS16.6

Central block group



Central block feed axis 150x30
Ref : 10258 or AS135
AS14 - SAS16 - SAS16.6



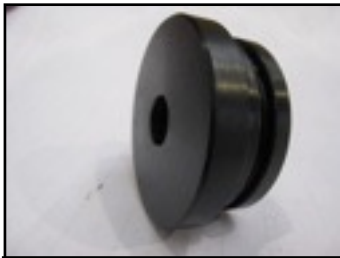
Axis 53x12x22
Ref : 10295 or AS1311
AS14 - SAS16 - SAS16.6



Axis 72x14
Ref : 10296
AS14 - SAS16 - SAS16.6



Centering axis
Ref : 10298
AS14 - SAS16 - SAS16.6



Plug
Ref : 20573
AS14 - SAS16 - SAS16.6



Nut 6P 17M 12x1,00x9
Ref : 10302
AS14 - SAS16 - SAS16.6



Roller
Ref : 20401
AS14 - SAS16 - SAS16.6



Roller 24x12x12
Ref : 20404
AS14 - SAS16 - SAS16.6



Central slide
Ref : 99129
AS14 - SAS16 - SAS16.6



Pads 2 flats 35x20x14
Ref : 10297
AS14 - SAS16 - SAS16.6



Feed pad
Ref : 20382
AS14 - SAS16 - SAS16.6



Guide perch
Ref : 96485 or AS1349
AS14 - SAS16 - SAS16.6



Piston
Ref : 94519
SAS16 - SAS16.6



Compression spring
∅13,7x19
Ref : 200182
AS14 - SAS16 - SAS16.6



Stop rod
Ref : 10300
AS14 - SAS16 - SAS16.6



Central Shaft Group

TORNOS AS14- SAS16 - SAS16DC - SAS16.6

Central shaft group



Central shaft
Ref : 365415
AS14 - SAS16 - SAS16.6



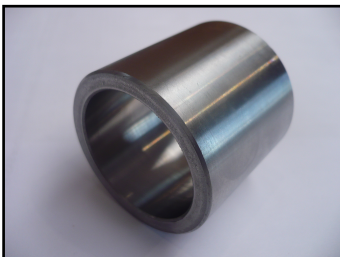
Distance ring
Ref : 94528
AS14 - SAS16 - SAS16.6



Ring 35x45x40,5
Ref : 366410
AS14 - SAS16 - SAS16.6



Wood key right 54x8x7
Ref : 11351
AS14 - SAS16 - SAS16.6



Bush 41x44,50
Ref : 10739 or AS20559
AS14 - SAS16 - SAS16.6



Bush 61x41x35
Ref : 10741 or AS20563
AS14 - SAS16 - SAS16.6



Bush 138x41x35
Ref : 94527
AS14 - SAS16 - SAS16.6



Gear Z=42
Ref : 10747
AS14 - SAS16 - SAS16.6



Gear Z=37
Ref : 96869
AS14 - SAS16 - SAS16.6



Gear Z=37
Ref : 366411
AS14 - SAS16 - SAS16.6



Gear Z=42
Ref : 366412
AS14 - SAS16 - SAS16.6



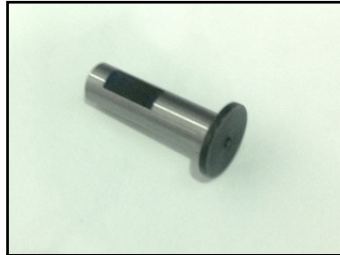
Pick up Group

TORNOS AS14- SAS16 - SAS16 DC - SAS16.6

Sub spindle pick up



Axis of clamping lever 136x20
Ref : 10376 or AS2419
AS14 - SAS16 - SAS16.6



Axis 37x10x17,80
Ref : 10537 or AS211417
AS14 - SAS16 - SAS16.6



Knurled axis 170x20
Ref : 11053 or AS28107
AS14 - SAS16 - SAS16.6



Axis of foundry clamping
Ref : 11064
AS14 - SAS16 - SAS16.6



Shouldered axis on rod
Ref : 11071
AS14 - SAS16 - SAS16.6



Solid carbide axis
Ref : 38213 or AS24259
AS14 - SAS16 - SAS16.6



Axis 63x12x18
Ref : 86271
AS14 - SAS16 - SAS16.6



Sub spindle
Ref : 42160 or AS24189-03
AS14 - SAS16 - SAS16.6



Clamping bush
Ref : 10865 oru AS24215
AS14 - SAS16 - SAS16.6



Clamping Slide
Ref : 20699
AS14 - SAS16 - SAS16.6



Feed Slide
Ref : 20594
AS14 - SAS16



Toggle holder ring
Ref : 10866
AS14 - SAS16 - SAS16.6



Toggle holder
Ref : 25931
AS14 - SAS16 - SAS16.6



Clamping toggle
Ref : 94734 or AS24187
AS14 - SAS16 - SAS16.6



Clamping coil
Ref : 115011 or AS24207
AS14 - SAS16 - SAS16.6



Sub spindle cap M32x1
Ref : 10867
AS14 - SAS16 - SAS16.6

Pick up Group

TORNOS AS14- SAS16 - SAS16 DC - SAS16.6

Sub spindle Pick up



Bronze box Ø38x32xLg45
 Ref : 84559 or AS24833
AS14 - SAS16 - SAS16.6



Eccentric bush 19,50x13x7
 Ref : 4905
AS14 - SAS16 - SAS16.6



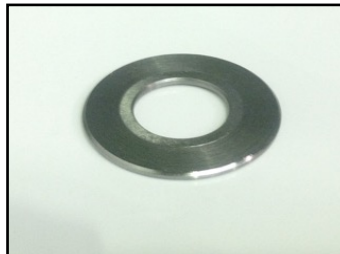
Bush 17x12x7
 Ref : 10860 or AS24179
AS14 - SAS16 - SAS16.6



Clamping bush collet holder
 Ref : 10863
AS14 - SAS16 - SAS16.6



Nut with collar 6P M16x10
 Ref : 10384
AS14 - SAS16 - SAS16.6



Bearing flange
 Ref : 42162 or AS24687
AS14 - SAS16 - SAS16.6



Nut of Stop screw 6P M8x0,75x8
 Ref : 10870
AS14 - SAS16 - SAS16.6



Nut of Clamping adjustment
 Ref : 10869 or AS24225
AS14 - SAS16 - SAS16.6



Friction - Rough part
 Ref : 5022
AS14 - SAS16 - SAS16.6



Roller 24x12x12
 Ref : 20404 or AS1365
AS14 - SAS16 - SAS16.6



Roller 20x10x12
 Ref : 20528 or AS14269
AS14 - SAS16 - SAS16.6



Recessing roller 26x12x12
 Ref : 86273
AS14 - SAS16 - SAS16.6



Safety pin 44x6,95
 Ref : 10861 or AS24177
AS14 - SAS16 - SAS16.6



Clamping Pad Sub spindle
 Ref : 10377 or AS2443
AS14 - SAS16 - SAS16.6



Feed Pad L39
 Ref : 10859
AS14 - SAS16 - SAS16.6



Feed slide Pad
 Ref : 20454
AS14 - SAS16 - SAS16.6

Pick up group

TORNOS AS14- SAS16 - SAS16 DC - SAS16.6

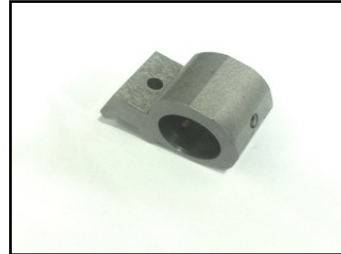
Sub spindle pick up



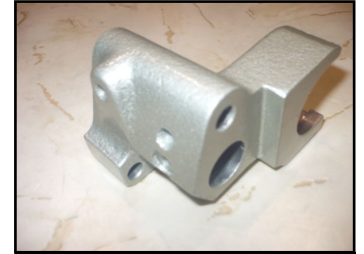
Stop Quill alone
Ref : 104952 or AS28/26
AS14 - SAS16 - SAS16.6



Quill fork
Ref : 40141
AS14 - SAS16 - SAS16.6



Steady front support
Ref : 41950 or AS2448
AS14 - SAS16 - SAS16.6



Clamping cast iron
Ref : 10378
AS14 - SAS16 - SAS16.6



Clamping screw
Ref : 10877 or AS24249
AS14 - SAS16 - SAS16.6



Feed support sub spindle
Ref : 25930 or AS24231
AS14 - SAS16 - SAS16.6



Special stop
Ref : 39490
AS14 - SAS16 - SAS16.6



Foundry stopping support
Ref : 25825 or AS28/13A
AS14 - SAS16 - SAS16.6



Non stop sub spindle feed lever
Ref : AS28/7
AS14 - SAS16 - SAS16.6



Non stop clamping lever sub
Ref : 25799 or AS2410
AS14 - SAS16 - SAS16.6



Feed lever sub spindle
Ref : 25801 or AS2420
AS14 - SAS16 - SAS16.6



Feed lever pick up
Ref : 25800 or AS2418
AS14 - SAS16 - SAS16.6



Foundry Clamping
Ref : 25826 - 25827
AS14 - SAS16 - SAS16.6



Slide
Ref : 10413
AS14 - SAS16 - SAS16.6



Piston
Ref : 25933
AS14 - SAS16 - SAS16.6



Stop screw counter operation
Ref : 10878 or AS24251
AS14 - SAS16 - SAS16.6

Pick up group

TORNOS AS14- SAS16 - SAS16 DC - SAS16.6

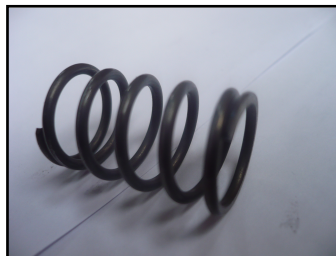
Sub spindle pick up



Tension spring 163x15
Ref : 200599
AS14 - SAS16 - SAS16.6



Tension spring 102x8,2
Ref : 200605
AS14 - SAS16 - SAS16.6



Compression spring Ø15,5
Ref : 200864
AS14 - SAS16 - SAS16.6



Compression spring
Ref : 200931
AS14 - SAS16 - SAS16.6

If your spare part is not in this catalog
Please contact us:

samo@samo.fr

For your request about price and delivery:

www.samo.fr

or

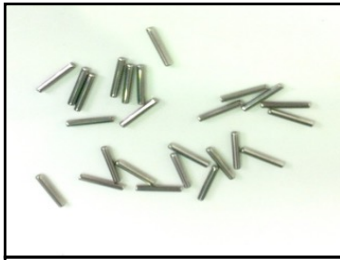
samo@samo.fr



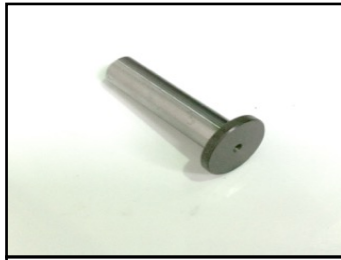
Clamping Lever group

TORNOS AS14- SAS16 - SAS16 DC - SAS16.6

Manuel and Automatic Clamping Lever



Needles
Ref : 201280
SAS16 - SAS16.6



Axis 53x12x22
Ref : 10295 or AS1311
AS14 - SAS16 - SAS16.6



Axis 118x22
Ref : 10434
AS14 - SAS16 - SAS16.6



Axis 46x12x20
Ref : 10519 or AS11339-1
AS14



Axis 50x12x20
Ref : 10536 ou AS11415
AS14



Axis 37x10x17,80
Ref : 10537 ou AS11417
AS14 - SAS16 - SAS16.6



Eccentric axis 51x12x26
Ref : 10538
AS14



Manual clamping roller axis L78
Ref : 86470
SAS16



Axis cylindrical head Ø12x40
Ref : 86704
SAS16 - SAS16.6



Lubricating ring clamping roller
Ref : 45469
SAS16 - SAS16.6



Clamping roller 26,50x17x15
Ref : 10518 or AS11337-1
AS14



Clamping roller 26,5x15x19
Ref : 86217
SAS16 - SAS16.6



Roller 24x12x12
Ref : 20404 or AS1365
AS14 - SAS16 - SAS16.6



Roller 20x10x12
Ref : 20528 or AS14269
AS14 - SAS16 - SAS16.6



Eccentric roller with hole Ø24
Ref : 86858
SAS16 - SAS16.6



Automatic clamping lever
AS1106 Ref : 10471
AS14



Automatic clamping lever L02
Ref : 86705
SAS16 - SAS16.6



Spring slide loading
Ref : 86714
AS14 - SAS16 - SAS16.6



Thread milling attachment Group

TORNOS AS14- SAS16 - SAS16 DC - SAS16.6

Used spare parts



**Assembly complete tapping
Friction + axis**
AS14 - SAS16 - SAS16.6



Turning Spindle
Ref : 104526 or AS27/1
AS14 - SAS16 - SAS16.6



Intermediate shaft tapping
Ref : 10990 or AS26255
AS14 - SAS16 - SAS16.6



Shaft straight
Ref : AS26285
AS14 - SAS16 - SAS16.6



Tapered shaft
Ref : 83259
SAS16 - SAS16.6



Micro Box
Ref : AS2642
AS14 - SAS16 - SAS16.6



Detapping and tapping
Ref : 93961 / 93960
SAS16.6



Blocking nut
Ref : 10999 or AS26281
AS14 - SAS16 - SAS16.6



Flange
Ref : 10389 or AS2636
AS14 - SAS16 - SAS16.6



Fork N°5
Ref : 46484
AS14 - SAS16 - SAS16.6



Fork
Ref : 10694
AS14 - SAS16 - SAS16.6



Guide
Ref : AS26287
AS14 - SAS16 - SAS16.6



Extension spring Ø15x102
Ref : 200433
AS14 - SAS16 - SAS16.6



Release rod
Ref : AS28114
AS14 - SAS16 - SAS16.6



Release cast iron lever
Ref : AS20254
AS14 - SAS16 - SAS16.6



Spring Support
Ref : AS2632-1
AS14 - SAS16 - SAS16.6



Cast iron
Ref : AS264-1
AS14 - SAS16 - SAS16.6



Cast iron
Ref : AS2628
AS14 - SAS16 - SAS16.6



Cast iron lever
Ref : AS2638
AS14 - SAS16 - SAS16.6



Cast iron + Shaft
Ref : AS2630 / AS26257
AS14 - SAS16 - SAS16.6



Independent Group

TORNOS AS14- SAS16 - SAS16 DC - SAS16.6

Upper Independent lever, small lever



Axis cylindrical head 90x20x35
Ref : 10420

AS14 - SAS16 - SAS16.6



Axis 50x12x19,70
Ref : 10422 or AS2881

AS14 - SAS16 - SAS16.6



Nut M20/125
Ref : 11039

AS14 - SAS16 - SAS16.6



Roller 24x12x12
Ref : 20404 or AS1365

AS14 - SAS16 - SAS16.6



Upper slide lg 315
Ref : 20451

AS14 - SAS16 - SAS16.6



Upper independent lever lg 225
Ref : 25821

AS14 - SAS16 - SAS16.6



Pad L46
Ref : 10421

AS14 - SAS16 - SAS16.6



Extension spring lg 102x15
Ref : 200433

AS14 - SAS16 - SAS16.6

Independent Group

TORNOS AS14- SAS16 - SAS16 DC - SAS16.6

Lower independent lever, large lever



Axis cylindrical head 90x20x35
Ref : 10420

AS14 - SAS16 - SAS16.6



Axis 50x12x19,70
Ref : 10422 or AS2881

AS14 - SAS16 - SAS16.6



Nut M20/125
Ref : 11039

AS14 - SAS16 - SAS16.6



Roller 24x12x12
Ref : 20404 ou AS1365

AS14 - SAS16 - SAS16.6



Lower slide lg 255
Ref : 20450

AS14 - SAS16 - SAS16.6



Cast iron lever lg 337
Ref : 25822

AS14 - SAS16 - SAS16.6



Pad L46
Ref : 10421

AS14 - SAS16 - SAS16.6



Extension spring lg 150x19,4
Ref : 201127

AS14 - SAS16 - SAS16.6



Drum Group

TORNOS AS14- SAS16 - SAS16 DC - SAS16.6

Drum



Support ring
Ref : 10573 or AS12299A
AS14 - SAS16 - SAS16.6



Ring
Ref : 10584 or AS12373
AS14 - SAS16 - SAS16.6



Pole drum support box
Ref : 10811
AS14 - SAS16 - SAS16.6



Thickness hold
Ref : 89195
AS14 - SAS16



Joint SKEGA
Ref : 204178
AS14 - SAS16 - SAS16.6



Ball pin
Ref : 10583 or AS12371
AS14 - SAS16 - SAS16.6



Stop screw drum
Ref : 10559
AS14 - SAS16 - SAS16.6

Consulted the online catalog of our
USED MACHINES TOOLS

www.samo.fr

Reel or Drum Bar holder + Support

TORNOS AS14- SAS16 - SAS16 DC - SAS16.6

Reel or Drum Bar holder + Support



Axis foot drum
Ref : 10337
AS14 - SAS16 - SAS16.6



Roller axis support of track
Ref : 49295
SAS16



Driving shaft
Ref : 10667 or AS15115
AS14



Stopping ring tube
Ref : 4813
AS14 - SAS16 - SAS16.6



Fixation bolting finger
Ref : 93671 or AS1519
AS14



Fixation bolting finger
Ref : 88534
SAS16 - SAS16.6



Drum positioning finger or Stud
Ref : 20417 - AS7561
AS14



Bush
Ref : 10668
AS14 - SAS16 - SAS16.6



Nut reel tube
Ref : 49299
AS14 - SAS16 - SAS16.6



Drum fixation
Ref : 4807 or AS15109-1
AS14 - SAS16 - SAS16.6



Cast iron drum support
Ref : AS1514
AS14



Cast iron drum support
Ref : 20414
SAS16



Roller foot drum 45x22x20
Ref : 20547
AS14 - SAS16 - SAS16.6



Roller 36x14x20
Ref : 20419
AS14 - SAS16 - SAS16.6



Drum guide
Ref : AS1567
AS14



Drum guide
Ref : 10335
AS14 - SAS16 - SAS16.6



Reel or Drum Bar holder + Support

TORNOS AS14- SAS16 - SAS16 DC - SAS16.6

Reel or Drum Bar holder + Support



Roller axis support of track
Ref :
AS14



Bolting plate
Ref : 25514 or AS1579
AS14



Bolting plate
Ref : 96777
SAS16



Bolting plate
Ref : 99346
SAS16.6



Drum spring
Ref : 203042
AS14



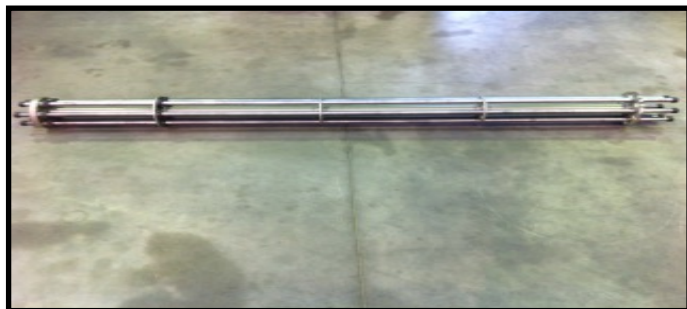
Drum spring
Ref : 88533
SAS16 - SAS16.6



compression spring
Ref : 200846
AS14 - SAS16 - SAS16.6



Reel support
Ref : 97293
SAS16.6



DRUM
AS14 - SAS16 - SAS16.6



DRUM TUBE
AS14 - SAS16 - SAS16.6

Slides Group

TORNOS AS14- SAS16 - SAS16 DC - SAS16.6

Slides 1 et 4



Box 55x40
Ref : 10602 ou AS14159
AS14 - SAS16 - SAS16.6



Short rack
Ref : 20515 or AS14153
AS14 - SAS16 - SAS16.6



Cast iron Rod station 4
Ref : AS1450
AS14 - SAS16 - SAS16.6



Lever station 4 Feed slide
Ref : 25787
AS14 - SAS16 - SAS16.6



Stop block slide station 1
Ref : 28824
AS14 - SAS16 - SAS16.6



Pusher 115x10,20x15
Ref : 25874 or AS14287
AS14 - SAS16 - SAS16.6



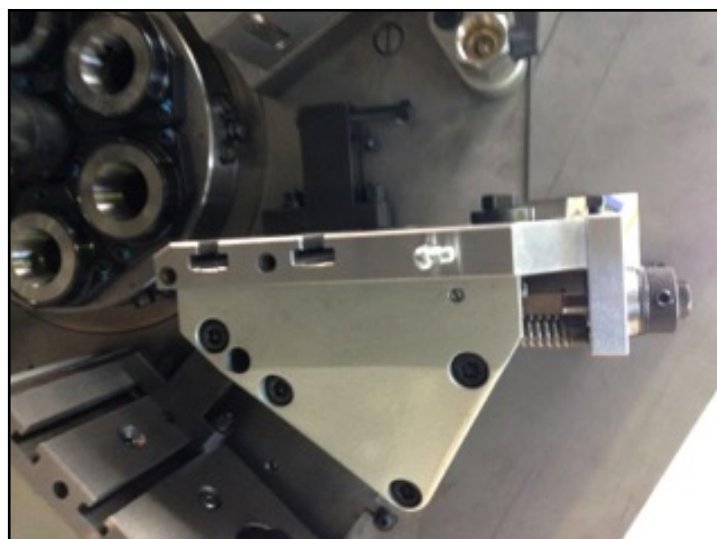
Spring 180,2x15,6 RCM516
Ref : 210245
AS14 - SAS16 - SAS16.6



Gear straight teeth z=35
Ref : 10631 or AS14249
AS14 - SAS16 - SAS16.6



Slide station 1
Ref : 108677
AS14 - SAS16 - SAS16.6



Slide station 4
Ref : 108680
AS14 - SAS16 - SAS16.6

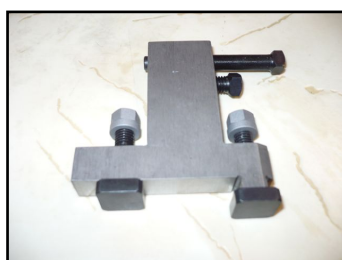
Slides Group

TORNOS AS14- SAS16 - SAS16 DC - SAS16.6

Slides 2 et 3



Splash guard slide
Ref : 4802 or AS14321
AS14 - SAS16 - SAS16.6



Slide stop station 2 & 3
Ref : 97303
AS14 - SAS16 - SAS16.6



Long rack
Ref : 20514
AS14 - SAS16 - SAS16.6



Plate
Ref : 20522 or AS14255
AS14 - SAS16 - SAS16.6



Pusher 140x12,16x17
Ref : 25875 or AS14289
AS14 - SAS16 - SAS16.6



Spring 222x17,50 RCM517
Ref : 210246
AS14 - SAS16 - SAS16.6



Washer Ø32 for screw head H
Ref : 10655 or AS14537
AS14 - SAS16 - SAS16.6



Screw head H
Ref : 10313 or AS1431-1
AS14 - SAS16 - SAS16.6



Gear straight teeth Z=35
Ref : 10630 or AS14247
AS14 - SAS16 - SAS16.6



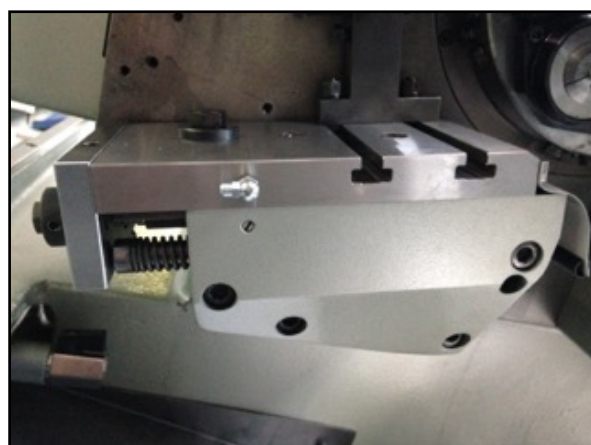
Knurled blocking nut
Ref : 10314 or AS1435-1
AS14 - SAS16 - SAS16.6



Screw adjusting jib
Ref : 10612
AS14 - SAS16 - SAS16.6



Split tube
Ref : 10633 or AS14253
AS14 - SAS16 - SAS16.6



Slide station 2
Ref : 108678
AS14 - SAS16 - SAS16.6



Slide station 3
Ref : 108679
AS14 - SAS16 - SAS16.6



Slides Group

TORNOS AS14- SAS16 - SAS16 DC - SAS16.6

Slides 5 et 6



Axis Ø10x22 station 5
Ref : 10323 or AS1423-1
AS14 - SAS16 - SAS16.6



Pivot axis chariot 5 & 6
Ref : 4681 or AS1495-1
AS14 - SAS16 - SAS16.6



Spindle nose cap
Ref : 20519 or AS14211
AS14 - SAS16 - SAS16.6



Nut with collar
Ref : 10620 or AS14219
AS14 - SAS16 - SAS16.6



Roller 20x10x8
Ref : 20407 or AS1477
AS14 - SAS16 - SAS16.6



Roller 20x10x12
Ref : 20528 or AS14269
AS14 - SAS16 - SAS16.6



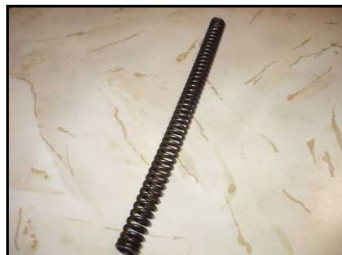
Stop multistage block
Ref : 10646
AS14 - SAS16 - SAS16.6



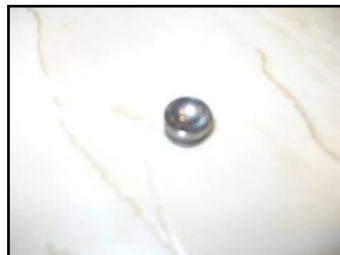
Pusher 135x10x13
Ref : 25873 or AS14285
AS14 - SAS16 - SAS16.6



Slide rule holder of guiding
Ref : 10619
AS14 - SAS16 - SAS16.6



Spring 215x13,5
Ref : 210247 or RCM518
AS14 - SAS16 - SAS16.6



Ball pin
Ref : 10618 or AS14213
AS14 - SAS16 - SAS16.6



Adjusting screw
Ref : 10331 or AS1491
AS14 - SAS16 - SAS16.6



Slide station 5
Ref : 108681
AS14 - SAS16 - SAS16.6



Slide station 6
Ref : 108682
AS14 - SAS16 - SAS16.6



Bolting and Indexing



Axis
Ref : 10481
AS14 - SAS16 - SAS16.6



Axis 33x12
Ref : 10482
AS14 - SAS16 - SAS16.6



Knurled axis 410x28
Ref : 32193 ou AS15511
AS14



Maltese cross
Ref : 20485
AS14



Crown gear
Ref : 10256 or AS125-2
AS14



Crown gear
Ref : 87694 or AS10647
SAS16



Indexing gear
Ref : 48370
AS14 - SAS16 - SAS16.6



Bolt finger
Ref : 20487
AS14 - SAS16



Roller
Ref : 20404 or AS1365
AS14 - SAS16 - SAS16.6



Bolt roller
Ref : 20488
AS14 - SAS16 - SAS16.6



Spring 120x29,20
Ref : 200835
AS14 - SAS16 - SAS16.6



Driving wheel
Ref : 97770
SAS16.6

Consulted the online catalog of our
USED MACHINES TOOLS

www.samo.fr

Rod control feed slides stations

1-2-3-4 AS14- SAS16 - SAS16 DC - SAS16.6

Rod control station 1, 2, 3 & 4



Axis stations 1 & 2 265x28
Ref : 10309
AS14 - SAS16 - SAS16.6



Upper axis stations 3 & 4 255x28
Ref : 10310 or AS1415
AS14 - SAS16 - SAS16.6



Axis 34x12
Ref : 10482 or AS14201-01
AS14 - SAS16 - SAS16.6



Lower axis rod 52x12
Ref : 10601 or AS14145
AS14 - SAS16 - SAS16.6



Axis of feeds 317x28x38
Ref : 10628 or AS14243
AS14 - SAS16 - SAS16.6



Axis of feeds 330x28x38
Ref : 10629 or AS14245
AS14 - SAS16 - SAS16.6



Carbide axis 27x10
Ref : 28839 or AS14171
AS14 - SAS16 - SAS16.6



Box 16x12
Ref : 10308 or AS1413
AS14 - SAS16 - SAS16.6



Box 95x40
Ref : 10603 or AS14161
AS14 - SAS16 - SAS16.6



Front box 80x40x74
Ref : 10604 or AS14163
AS14 - SAS16 - SAS16.6



Front box 86x40x74
Ref : 10605 or AS14165
AS14 - SAS16 - SAS16.6



Roller 20x10x12
Ref : 20528 or AS14269
AS14 - SAS16 - SAS16.6

For your request about price and delivery:

www.samo.fr

or

samo@samo.fr



Oscillating Bar Stop Group

TORNOS AS14- SAS16 - SAS16 DC - SAS16.6

Oscillating bar stop group



Axis 28x10
Ref : 5026 or AS29173
AS14 - SAS16 - SAS16.6



Axis oscillating stop 150x20
Ref : 10264 or AS291
AS14 - SAS16 - SAS16.6



Stop holder axis 875x26
Ref : 10484 or AS29089
AS14 - SAS16



Staged axis
Ref : 11087 or AS29109
AS14 - SAS16 - SAS16.6



Carbide axis 27x10
Ref : 28839 or AS14171-03
AS14 - SAS16 - SAS16.6



Key 120x8x7
Ref : 10433 or AS2987-1
AS14 - SAS16 - SAS16.6



Split nut
Ref : 10427 or AS2925
AS14 - SAS16 - SAS16.6



Roller 20x10x12
Ref : 20528 or AS14269
AS14 - SAS16 - SAS16.6



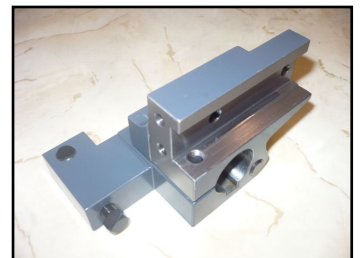
Levier butée de barre
Ref : 25830 or AS2910
AS14 - SAS16 - SAS16.6



Complete drill holder lever
Ref : 101770 or AS24/3
AS14 - SAS16 - SAS16.6



Drill holder
Ref : 10888
AS14 - SAS16 - SAS16.6



Cast iron drill holder
Ref : 25802
AS14 - SAS16 - SAS16.6



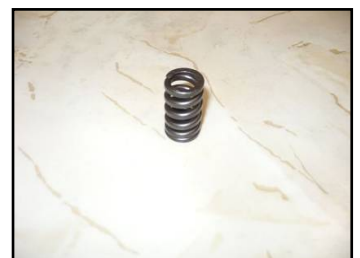
Drill holder plate
Ref : 10864
AS14 - SAS16 - SAS16.6



Gear oscillating stop 19 teethes
Ref : 10435 or AS2991-1
AS14 - SAS16 - SAS16.6



Roller holder
Ref : 20385 or AS293
AS14 - SAS16 - SAS16.6



Compression spring 27x15,5
Ref : 200348 or RPC245
AS14 - SAS16 - SAS16.6



Screw Lg30-Lg45-Lg67
Ref : 93469 - 93468 - 93470
AS14 - SAS16 - SAS16.6



Loading Group

TORNOS AS14- SAS16 - SAS16 DC - SAS16.6

Loading group



Axis 53x12x22
Ref : 10295 or AS1311
AS14 - SAS16 - SAS16.6



Axis 120x22
Ref : 10434 or AS11205
AS14 - SAS16 - SAS16.6



Stop axis 130x15 M10
Ref : 10489 or AS11233
AS14 - SAS16



Axis bar end 80x12x21,70
Ref : 10513 or AS11315
AS14



Axis fastening rod Ø 36,10
Ref : 10494
AS14 - SAS16 - SAS16.6



Axe attache de bielle Ø 26,50
Ref : 10495
AS14 - SAS16 - SAS16.6



Connecting rod joint bold
Ref : 10500
AS14



Rod
Ref : 10497
AS14 - SAS16



Loading bar
Ref : 20500
AS14 - SAS16



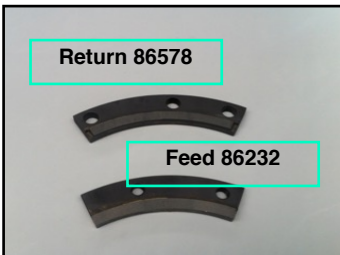
Nut
Ref : 10498 ou AS11261
AS14 - SAS16 - SAS16.6



Roller 24x12x12
Ref : 20404 ou AS1365
AS14 - SAS16 - SAS16.6



Return AS11219-1
or 48545
Feed AS11221-1
or 10486
Feed and Return Pads
Ref : 10486(feed) 48545(return)
AS14



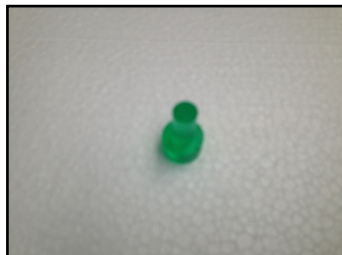
Return 86578
Feed 86232
Feed and Return Pads
Ref : 86232(feed) 86578(return)
SAS16 - SAS16.6



Fastening block
Ref : 10499 or AS11263
AS14 - SAS16 - SAS16.6



Stop block
Ref : 10488 or AS11231
AS14



Stop block
Ref : 86557
AS14 - SAS16 - SAS16.6



Tension spring 80x20
Ref : 200173
AS14 - SAS16 - SAS16.6



Tension spring 335x24
Ref : 202347
AS14 - SAS16 - SAS16.6



Loading Group

TORNOS AS14- SAS16 - SAS16 DC - SAS16.6

Loading group



Return bar lever
Ref : AS1194
AS14



Return bar lever
Ref : 97328
SAS16.6



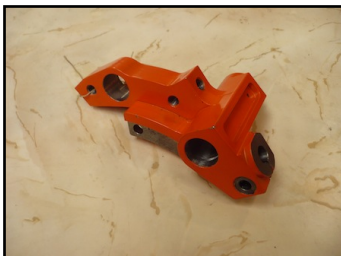
Loading lever feed bar
Ref : AS1196
AS14



Loading lever
Ref : 91405
SAS16



Adjustment lever feed bar
Ref : AS1158
AS14



Feed bar lever
Ref : 86714
SAS16



Loading lever
Ref : 97325
SAS16.6



Loading lever Lg Pad 120
Ref :
SAS16.6 - SAS16



Bar feed adjustment lever
Ref : 91858
SAS16

Please contact us:

samo@samo.fr



Speed box production



Hold model
Ref : AS20439
AS14



Single clutch
Ref : 115163
AS14 - SAS16



Double clutch
Ref : 115162
AS14 - SAS16



Electro clutch
Ref : 202529
SAS16



Clutch disc
Ref : 414
AS14 - SAS16



Clutch disc
AS14 - SAS16



Electro clutch
SAS16



Grooved bush
Ref : AS201111-1
AS14 - SAS16



Work bell
Ref : AS201155
AS14 - SAS16



Slow speed bell
Ref : AS201153
AS14 - SAS16



Fast speed bell
Ref : AS201121-1
AS14 - SAS16



A Set SE100 Fast friction
Ref : 115100
AS14 - SAS16



Ring
Ref : AS20941
AS14 - SAS16



Ring
Ref : AS201235
AS14 - SAS16



Ring
Ref : AS20157
AS14 - SAS16



Adjustment ring of clutch
Ref : 202009
AS14 - SAS16



Bush
Ref : AS2011071 - 11354
AS14 - SAS16



Shaft + Sleeve
Ref : AS20511-1 / AS206
AS14 - SAS16



**Clamping sleeve
of single or double clutch**
Ref : AS20205 - 85486
AS14 - SAS16



Electro
AS14 - SAS16



Speed box production



Toggles (Set of 3)
Ref : 204445

AS14



Cast iron box naked
Ref : AS2052-3

AS14 - SAS16



Finger
Ref : AS20387

AS14 - SAS16



Sleeve

AS14 - SAS16



Mechanical clutch segment
Ref : 85497 or AS2020-29

AS14 - SAS16



Fork + clutch driving tube
Ref : AS2056

AS14 - SAS16



Fork

AS14 - SAS16



Control

AS14 - SAS16



Stretcher

AS14 - SAS16



Ball cage

Ref : 202017

AS14 - SAS16



A set of 3 parts:

Ref : AS 201395/201381/201383

AS14 - SAS16



Support of crank-handle

Ref : AS201163-1

AS14 - SAS16



Triggering mechanism

Ref : AS20829

AS14 - SAS16



Security speed box

Ref : AS10131 or AS20160

AS14 - SAS16



Friction

Ref : 11356 or AS201113-1

AS14 - SAS16



Axis + Nut + Sleeve

AS20815 - AS20817 - AS20819

AS14 - SAS16



Shaft fast speed

Ref : 11360

AS14 - SAS16



Axis

AS14 - SAS16



Shaft

Ref : AS201149-1

AS14 - SAS16



Worm screw

Ref : 11363 or AS20505-3

AS14 - SAS16

Speed box production



Triggering control
Ref : AS2060
AS14 - SAS16



Speed box lever
Ref : AS20104
AS14 - SAS16



Lever acceleration
Ref : AS20108
AS14 - SAS16



Triggering lever
Ref : AS20138
AS14 - SAS16



Triggering lever
Ref : AS20154
AS14 - SAS16



Lever
Ref : AS20156
AS14 - SAS16



Cast iron acceleration
Ref : 25890 or AS20156
AS14 - SAS16



Lever
Ref : AS20115 or AS20153
AS14 - SAS16

Speed Box Production Group

Clutch



Worm wheel
Ref : 10352 or AS2078
AS14 - SAS16



Upper Camshaft Group

TORNOS AS14- SAS16 - SAS16 DC - SAS16.6

Camshaft



Camshaft
Ref : 97251
AS14 - SAS16 - SAS16.6



Back box
Ref : 10267 or AS298
AS14 - SAS16 - SAS16.6



Box 60x50x70
Ref : 10288
AS14 - SAS16 - SAS16.6



Box 50x62x40
Ref : 10289 or AS1180-1
AS14 - SAS16 - SAS16.6



Box
Ref : 11371 ou AS201199
AS14 - SAS16 - SAS16.6



Cam follow up slide station 2
Ref : 10595
AS14 - SAS16 - SAS16.6



Cam follow up slide station 3
Ref : 10596
AS14 - SAS16 - SAS16.6



Cam follow up slide station 4
Ref : 10597
AS14 - SAS16 - SAS16.6



Cam follow up slide station 6
Ref : 10621 or AS14223-1
AS14 - SAS16 - SAS16.6



Sleeve nut
Ref : 10598
AS14 - SAS16 - SAS16.6



Split nut M30x125
Ref : 10713
AS14 - SAS16 - SAS16.6



**Cam holder sleeve 2 et 3
+ bolting**
Ref : AS14123
AS14 - SAS16



Cam holder sleeve 2 et 3
Ref : 10593 or AS14105-1
AS14 - SAS16 - SAS16.6



Bronze wheel
Ref : 36179 or AS2094-1
AS14



Bronze wheel
Ref : 93499
SAS16

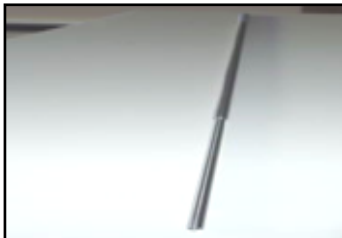


Axis 36x10
Ref : AS2431
AS14 - SAS16 - SAS16.6

Upper Camshaft Group

TORNOS AS14- SAS16 - SAS16 DC - SAS16.6

Ejector Group



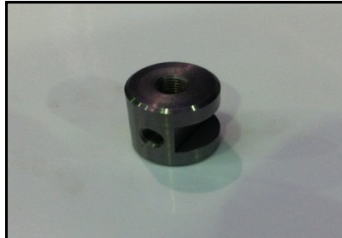
Extraction rod
Lg 820 Ref : 10862
Lg 825 Ref : 91672
AS14 - SAS16 - SAS16.6



Axis ejector lever
Ref : 10380 or AS2429
AS14 - SAS16 - SAS16.6



Axis ejector lever 111x26x18
Ref : 94739
SAS16



Extraction box
Ref : 20423
AS14 - SAS16 - SAS16.6



Extraction cam ejector nozzle
Ref : 10858
AS14 - SAS16 - SAS16.6



Cast iron lever
Ref : 25771 or AS248
AS14



Pad
Ref : 10382 or AS2433
AS14 - SAS16 - SAS16.6



Compression spring
Ref : 201097 or RCC113
AS14 - SAS16 - SAS16.6

IMPORTANT STOCK OF USED CAMS

Slides, Central block, Pick up, Independents etc.....

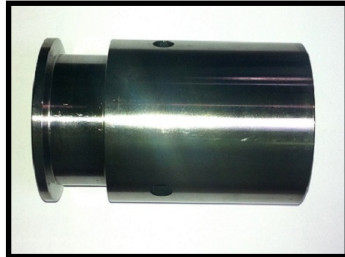
AS14 - SAS16

Do not hesitate to contact us





Spare parts



Clamping sleeve
Ref : 41184
BS20



Clamping sleeve
Ref : 45394
BS20



Clamping sleeve
BS20



Friction stopping spindle
BS20



Clamping toggles
Ref : 45397
BS20



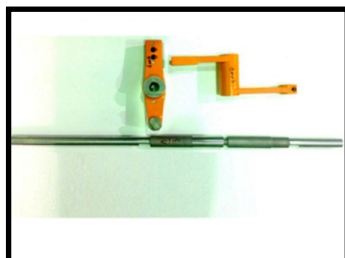
Slide shaft station5 & 8
Ref : 37393
BS20



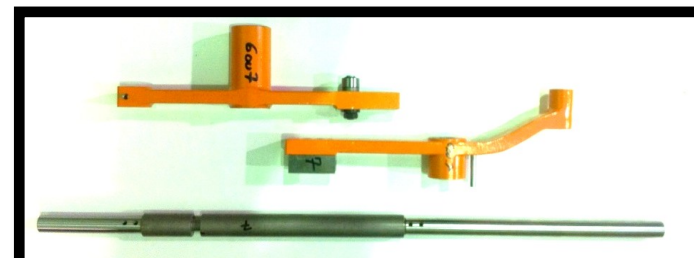
Rack station 6 & 7
Ref : 97718
BS20



Rack station 1,2, 3 & 4
Ref : 97719
BS20



Independent Station 1 or 3
BS28/11 Ref : 104157
BS20



Independent Station 6 or 7
BS28/9 Ref : 104154
BS20



Independent Station 4 or 5
BS28/10 Ref : 104156
BS20

Attachment



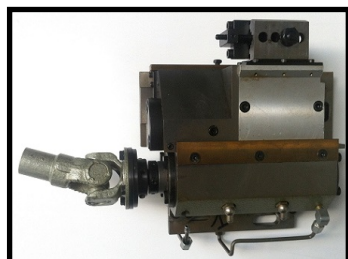
Broaching attachment
Ref : BS31/4
BS20



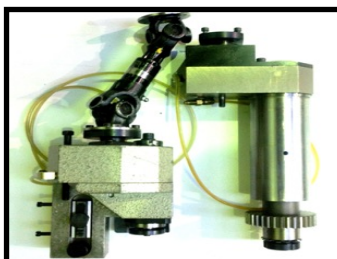
Sliding attachment
Ref : BS32/1-1
BS20



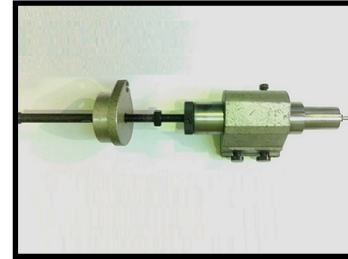
Milling attachment
Ref : 104220 or BS25/1
BS20



Thread chasing attachment
Ref : BS33/6-9
BS20



Polygon attachment
Ref : 996120 or BS33/3-1
BS20



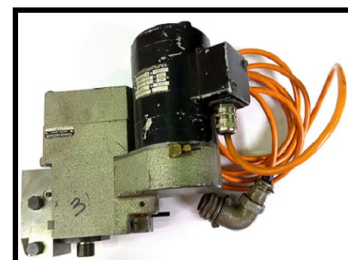
Tailstock
Ref : 104132 - BS27/5
BS20



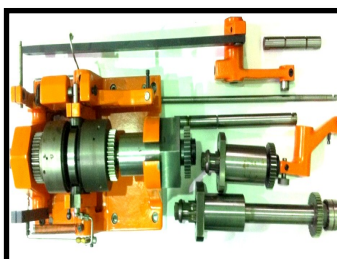
Complete Fixed driller
Ref : 104287
BS20



Independent driller turning
Ref : 104127 or BS27/2
BS20



Complete transverse
Ref : 111197 or BS27/10
BS20



Assembly complete tapping
BS20



Attachment Group

TORNOS AS14 - SAS16 - SAS16 DC- SAS16.6

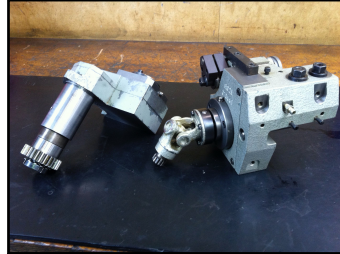
Attachment



Milling attachment
Ref : 104556 or AS25/8
AS14 - SAS16 - SAS16.6



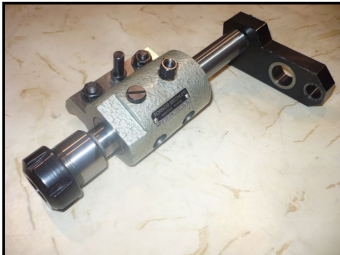
Broaching attachment
Ref : 104761 or AS31/32
AS14 - SAS16 - SAS16.6



Polygon attachment
Ref : 996120
AS14 - SAS16 - SAS16.6



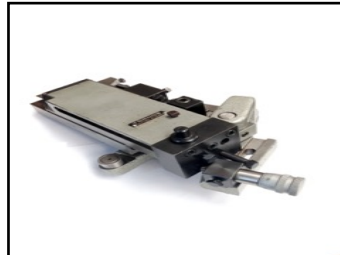
**Independent spindle no turning
3 à 6**
Ref : 107822 or AS27/8-1
AS14 - SAS16 - SAS16.6



Independent spindle no turning
Ref : AS27/8
AS14 - SAS16 - SAS16.6



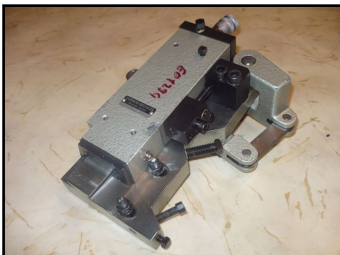
**Independent spindle
Turning on slide**
Ref : AS27/2
AS14 - SAS16 - SAS16.6



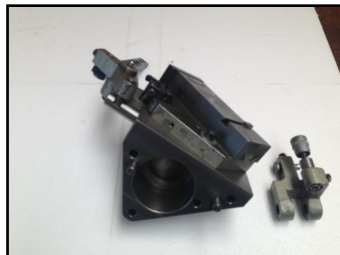
Slider
Ref : AS32/20
AS14 - SAS16 - SAS16.6



**Sliding tail stock
Station 1 to 5**
Ref : AS27/3 or 5
AS14 - SAS16 - SAS16.6



Traversing slide station 2
Ref : 104614 or AS32/19
AS14 - SAS16 - SAS16.6



Slide to 45° station 4
Ref : AS14/4
AS14 - SAS16 - SAS16.6



Re-engaging device for fette die
Ref : 104594 or AS27/15
AS14 - SAS16 - SAS16.6



**Steady W12 / Complete fixed
driller**
Ref : 104528 or AS27/3
AS14 - SAS16 - SAS16.6



**Steady W20 / Complete fixed
driller**
Ref : 104573 or AS27/29
AS14 - SAS16 - SAS16.6



Double driller
Ref : AS27/3D
AS14 - SAS16 - SAS16.6



**Double driller
Station 1 to 5**
Ref : 104567 or AS27/13
AS14 - SAS16 - SAS16.6



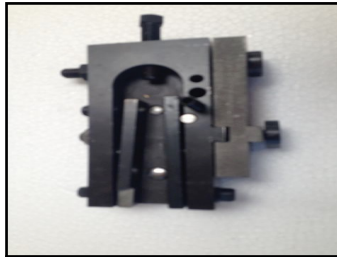
Attachment Group

TORNOS AS14 - SAS16 - SAS16 DC- SAS16.6

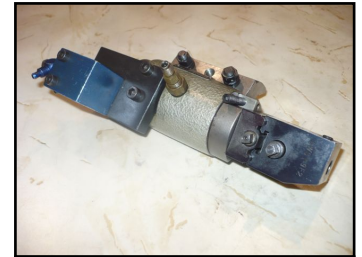
Attachment



Standard toolholder
Ref : 104590 - AS30/80
AS14 - SAS16 - SAS16.6



Standard toolholder
Ref : 104597 - AS30/81
AS14 - SAS16 - SAS16.6



Toolholders
Ref : AS37/32 4
AS14 - SAS16 - SAS16.6



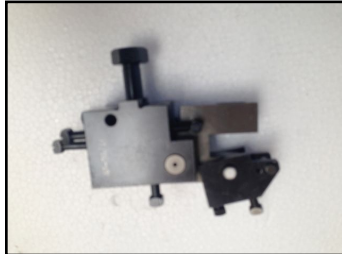
Broaching toolholder
Ref : 108649 - AS32/4
AS14 - SAS16 - SAS16.6



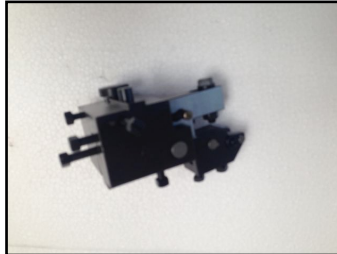
Broaching toolholder
Ref : 107625 - AS32/5-1
AS14 - SAS16 - SAS16.6



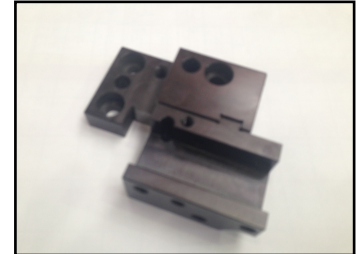
Tangential Toolholders
Station 1 to 5
Ref : 104628 - AS30/10
AS14 - SAS16 - SAS16.6



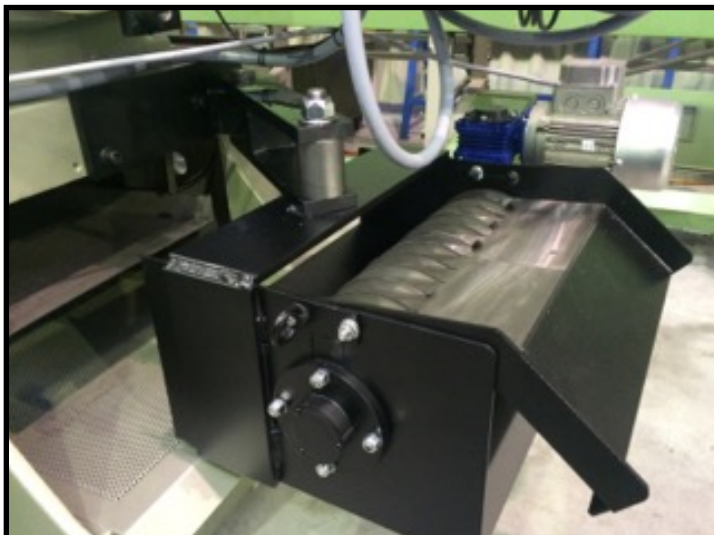
Shaving device
Ref : 104632 - AS30/16
AS14 - SAS16 - SAS16.6



Shaving device
Ref : 104644 - AS30/27
AS14 - SAS16 - SAS16.6



Cut off toolholder station 6
Ref : 104663 - AS30/67
AS14 - SAS16 - SAS16.6



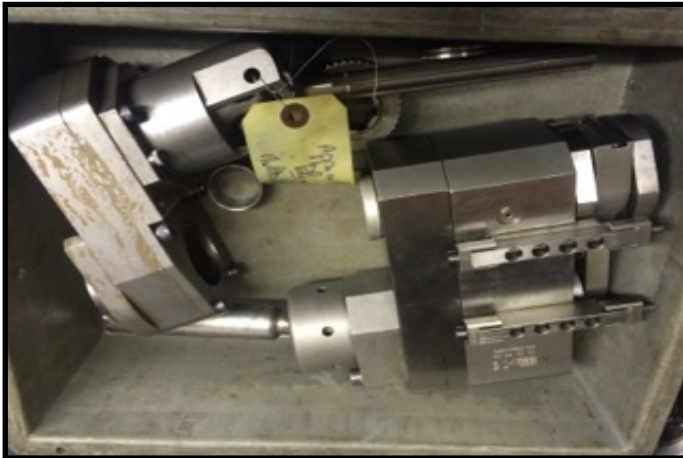
ARTICULATED MAGNETIC CONVEYORS SAMO
AS14 - SAS16 - SAS16.6



MAGNETIC CONVEYORS TORNOS
AS14 - SAS16 - SAS16.6



Attachment



POLYGON ATTACHMENT

MULTIDECO 20/6 - 26/6



SLOTING ATTACHMENT

MULTIDECO 20/6 - 26/6



CHUTE EVACUATION FOR PIECE

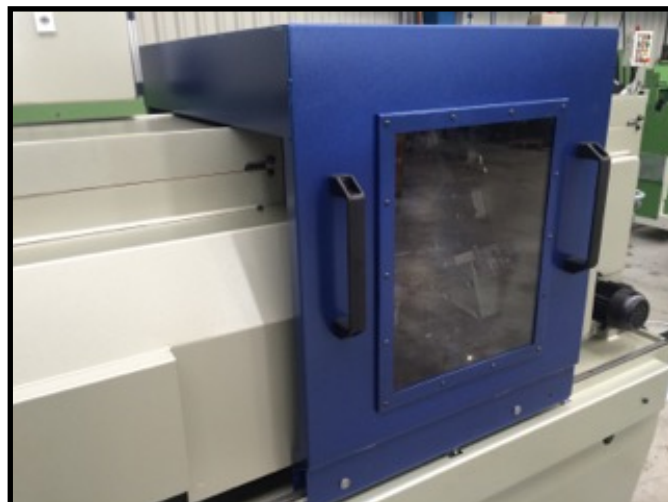
Ref : 104850

AS14 - SAS16 - SAS16.6



OUTSIDE CONTAINER

AS14 - SAS16 - SAS16.6



TUNNEL CARTER

AS14 - SAS16

SAMO



SAMO
SAVOIE ALPES MACHINES OUTILS

Consult also

**Catalog of
used**

MACHINES TOOLS



We are buyers of single units or
batches of machine tools

Visit our web site

www.samo.fr

SAMO
SAVOIE ALPES MACHINES OUTILS

SAMO



SAMO

SAVOIE ALPES MACHINES OUTILS



SAMO

ZAC des Bordets
792 Rue des Sarcelles 74130
BONNEVILLE
TEL: +33 (0)4 50 03 17 52
email : samo@samo.fr

SAMO

SAVOIE ALPES MACHINES OUTILS